



UiO • **Institute of Health and Society**
University of Oslo

Geopolitics, Human Security and Health Equity in an Era of Polycrises

Prince Mahidol Award Conference January 2024



Geopolitics, Arms Race and Humanity

Prof. Espen Bjertness

Department of Community Medicine and Global Health

Faculty of Medicine, University of Oslo,

Oslo, Norway



What contributes to making a war particularly gruesome

1. Both parties are strong enough to sustain the war, resulting in its prolonged duration.
2. The war involves areas with a large population.
3. The warring parties do not respect ethical rules regarding permissible means: terror bombing, rape, torture, (mass) murder. Prolonged wars tend to increase in brutality.

Fatalities:

- World War II (1939-1945): 60-85 million
- World War I (1914-1918): 17 million
- Vietnam War (1955-1975): 800,000-3.8 million
- Chinese Civil War (1927-1949): 7.5 million
- Korean War (1950-1953): 1.2 million
- Israel-Palestine conflict/war (1920-): 115,000
- Gaza war (7. October 2023-): 25.000
- Russia-Ukraine war (24. February 2022-): 100,000 Russian soldiers ? / ?Ukraine soldiers
- Myanmar (1. February 2021-): 6,337 civilians

Myanmar, after Military Coup February 1, 2021: (Sources: UNHCR 2023; AAPB <https://aappb.org>)

Fatalities: 6,337 civilians killed the first 20 months

Injuries: 2,614 civilians wounded the first 20 months

Internally displaced people: 1.6 million since February 1, 2021

Arrested: > 25,000 people since February 1, 2021, and nearly 20,000 people remain in detention.

Sentenced to death: 155 people (in absentia)

Urgent need of protection and humanitarian assistance: 17.6 mill (5 mill children)

Health system: 557 doctors dismissed from their positions (medical license revoked)

750 doctors and medical professionals arrested

97 health workers killed

171 health facilities damaged

1,081 conflict incidents have impacted healthcare

GAZA as of 16. January 2024 (Day 101):

(Source: OCHA OPT <https://www.ochaopt.org/>)

Fatalities: 24,285 killed (70% children and women)

Injuries: 61,154

Internally displaced people: 1,9 million (85% of Gaza population)

Housing: 60% housing units destroyed or damaged

Education: 374 education facilities damaged (51% have been hit)
625,000 (100%) students with no access to education

Health system: 15 out 36 hospitals in Gaza are partly functioning

121 ambulances damaged

337 health workers killed + 152 UN staff

Food: The last functioning mill destroyed 15. November

Media: 117 journalists killed

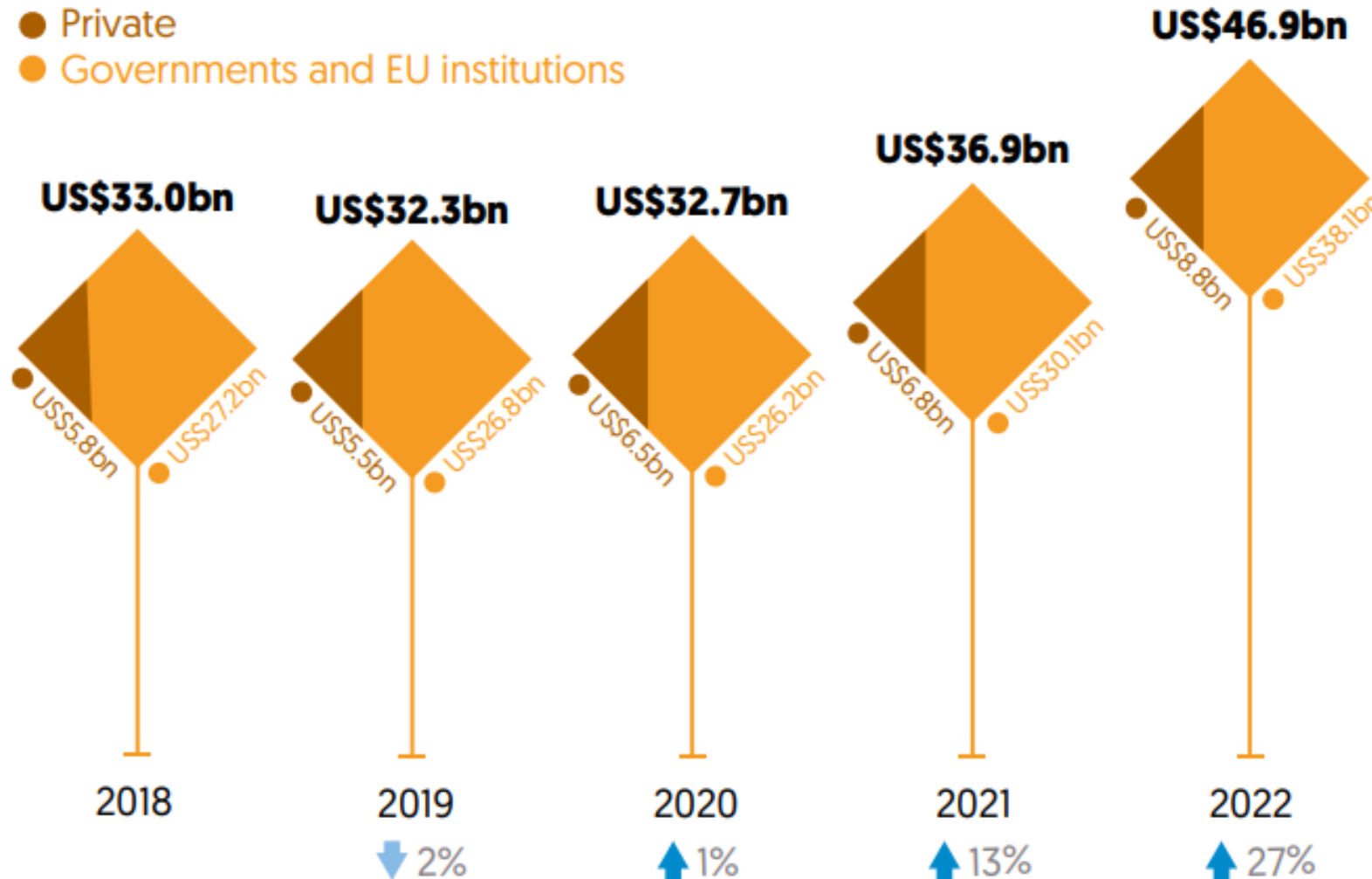
Humanitarian funding trends

https://devinit-prod-static.ams3.cdn.digitaloceanspaces.com/media/documents/GHA2023_Digital_v9.pdf

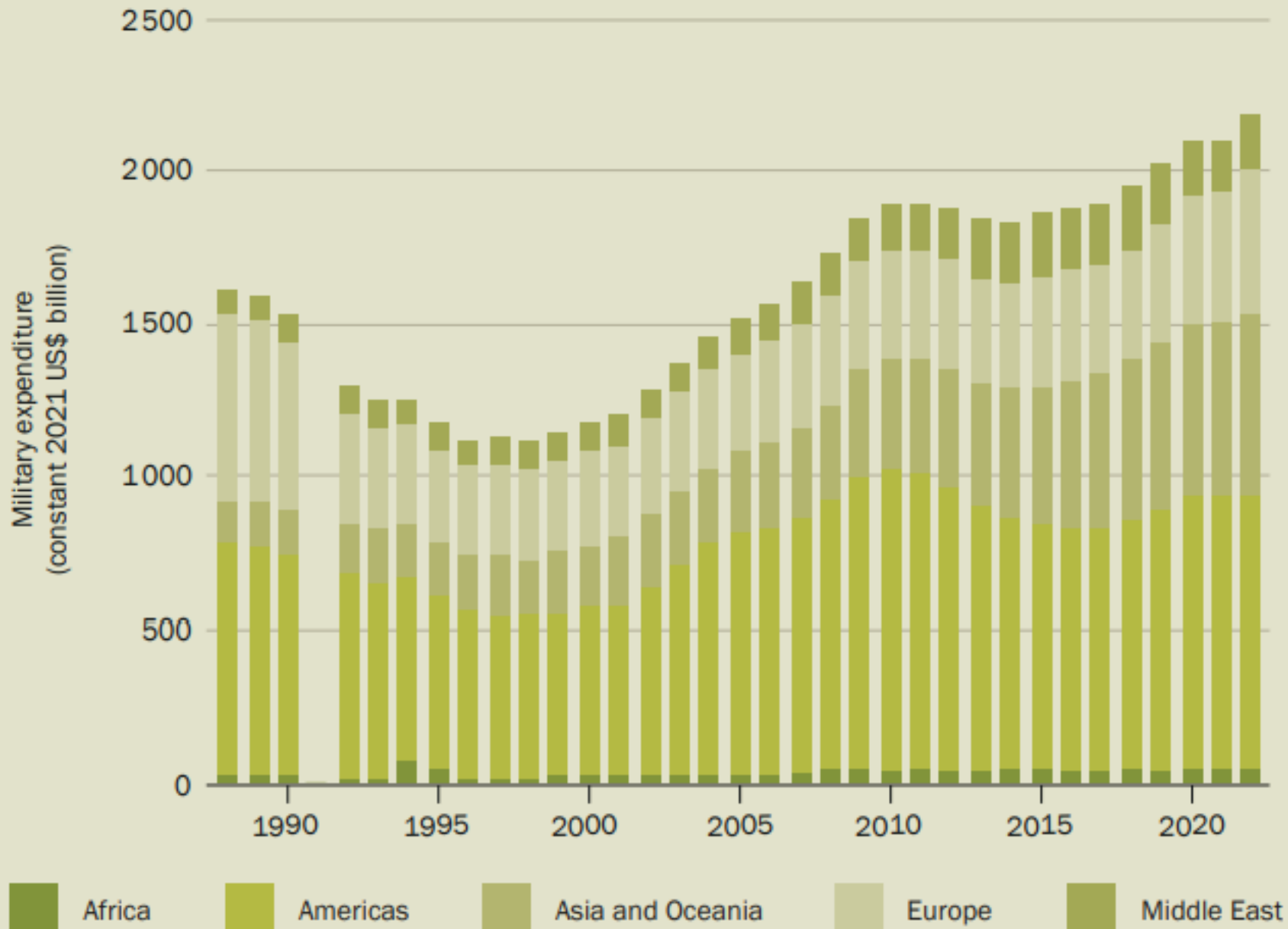
How much international humanitarian assistance was there in 2022?

International humanitarian assistance grew by more than a quarter in 2022

- Private
- Governments and EU institutions



In 2022, three quarters of all people in need of humanitarian assistance faced at least two dimensions of risk: **conflict, climate and/or socio-economic vulnerability.**



[https://www.sipri.org/sites/default/files/2023-04/2304 fs milex 2022.pdf](https://www.sipri.org/sites/default/files/2023-04/2304_fs_milex_2022.pdf)

Figure 1. World military expenditure, by region, 1988–2022

The Lancet Commission on peaceful societies through health equity and gender equality

